

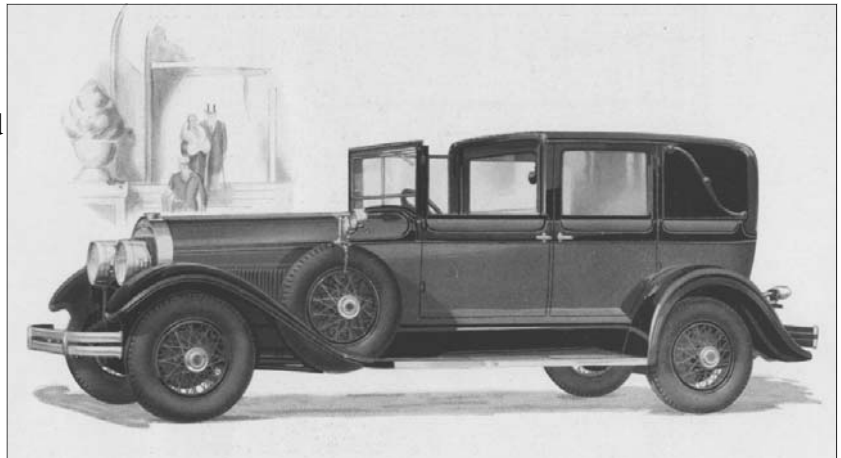
Locomobile built some of the rarest and most expensive cars of the Classic era

By Les Jackson

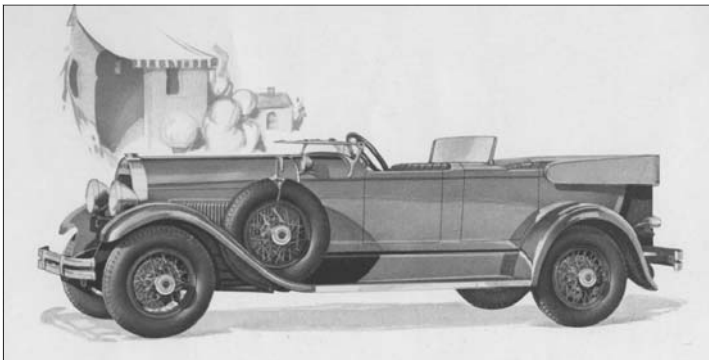
The *CCCA Handbook* shows the following about Locomobile in the list of approved Full Classics®: “All left hand drive models 48 and models 90, 1927-29 model 8-80, 1929 model 8-88.” The 90, 8-80 and 8-88 Classic models were much cheaper than the Model 48.

The recently adopted provision regarding virtually identical models earlier than 1925, has enabled some Locomobiles from the 1910's to be approved.

The model 48 was the famous Locomobile that survived virtually unchanged for more than a decade even though only modest numbers were produced, in part at least



The 1929 All Weather Cabriolet accommodated 7 passengers and sold for \$7,200. It had an 8 cylinder engine that delivered 115 horsepower at 3300 rpm. Tires were 6 ply, 30 x 6.50. The standard rear axle ratio was 4.81 to 1.



This is the 8-88 Locomobile for 1929 in the 4 passenger sport phaeton version. The first Locomobile with a dual cowl was made in 1916, perhaps the first car ever with that configuration.

The Junior 8 from 1925 and 1926, the model 8-70 from 1927 and 1928 are not Full Classics®. They were much cheaper and had smaller engines.

The Locomobile Full Classics® had powerful engines to carry the massive weight of the cars. Their first 100 horsepower engine was in the 1925 Model 48.

Below: The venerable Locomobile model 48 was produced between 1914 and 1929 without significant changes. The left hand drive cars are Full Classics®.



because of the high price. In 1924, for example, factory prices of the Model 48 were from \$7,900 to \$11,200. In 1929 the Model 48 was priced at \$12,500 for the top models and the cheapest was \$9,600. (The same year the cheapest Packard was \$2,285, less than one-fourth the cost of the cheapest Model 48.)

Model 48 began in 1911 but for the first few years they were right hand drive cars. Only the left hand drive 48's are considered Full Classics®.

The last year any Locomobiles were built was 1929, the year of the Wall Street crash.

